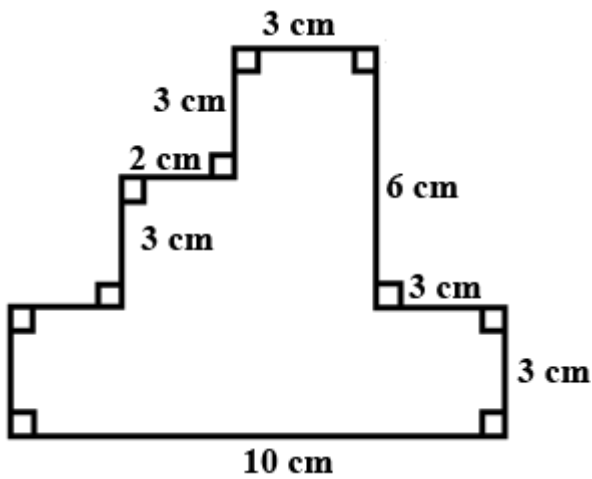


1) Find the next number.

2, 7, 22, 67, 202, ?

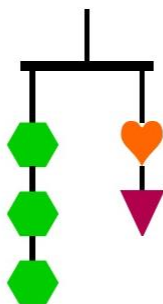
- A) 606 B) 603
 C) 609 D) 607

2) What is the sum of the perimeter and area of this shape?



- A) 88 B) 90
 C) 92 D) 98

3) Find the value of:



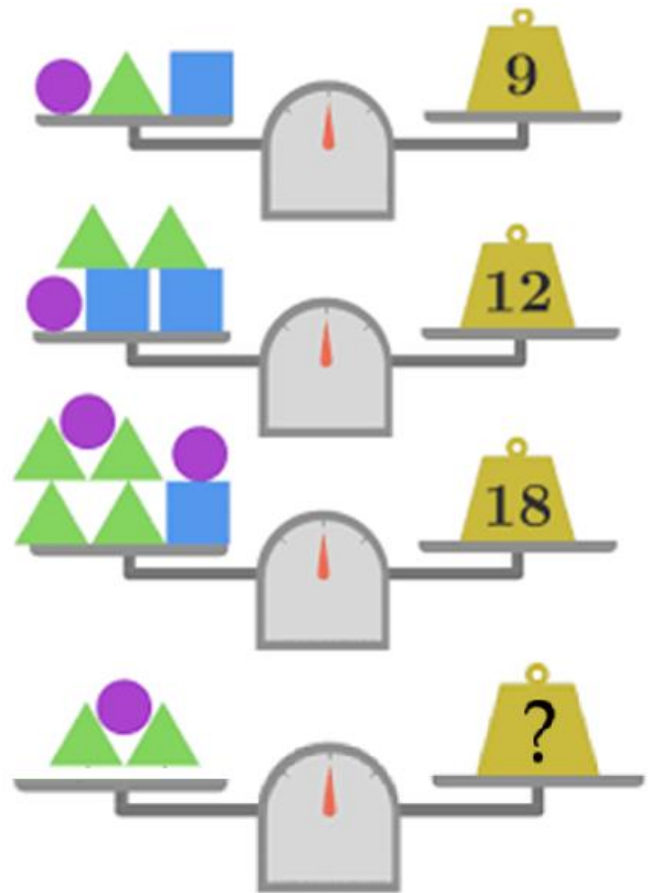
$\text{Green Hexagon} = 7$ $\text{Purple Inverted Triangle} = 12$ $\text{Orange Heart} = \boxed{?}$

- A) 8 B) 9
 C) 11 D) 5

4) What is the remainder when 2025 is divided by 13?

- A) 8 B) 10
 C) 9 D) 12

5) Solve the following equation:



- A) 8 B) 5
 C) 10 D) 1

6) The sum of two numbers is 72. If one number is 8 less than the other, what is the larger number?

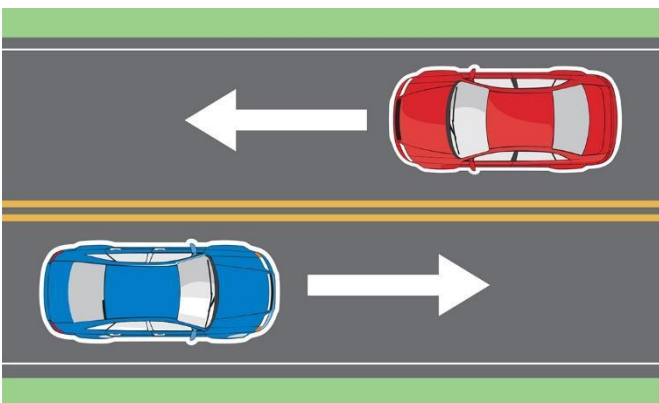
- A) 45 B) 40
 C) 35 D) 38

7) Find the sum of the numbers that are divisible by either 3 or 4.



- A) 540
- B) 420
- C) 470
- D) 490

8) A car leaves City A and travels towards City B at a speed of 80 km per hour. At the same time, another car leaves City B and travels towards City A at a speed of 60 km per hour. If the distance between the two cities is 630 km, how long will it take for the two cars to meet?



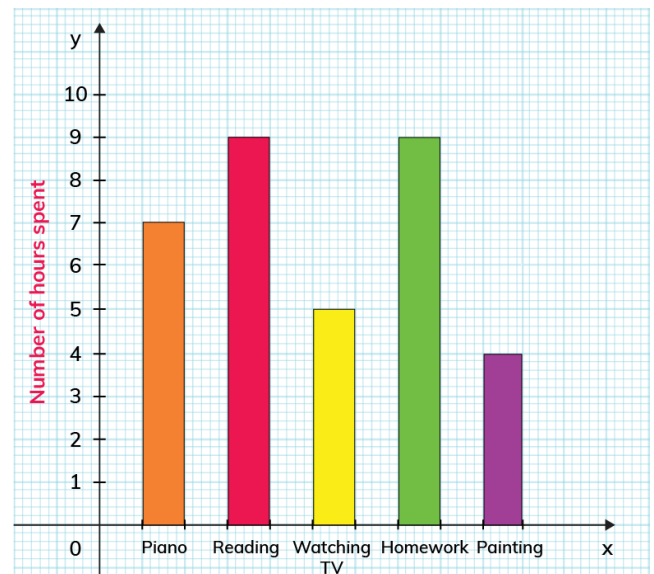
- A) 4 hours
- B) 5 hours
- C) 4,5 hours
- D) 5,5 hours

9) A rectangular swimming pool has a length that is four times its width. If the perimeter of the pool is 60 meters, what is its area?



- A) 96
- B) 169
- C) 112
- D) 144

10) Jerry spends his time after school on different activities throughout the week. How many hours will he spend on these activities?



- A) 24 B) 28
 C) 34 D) 36

11) A chocolate factory produces chocolates in boxes of 12. If they have 840 chocolates, how many boxes can they fill?



- A) 68 B) 70
 C) 75 D) 80

12) Solve:

$$2025 + 2023 - 4202 + 3333 - 1998 = ?$$

- A) 1181 B) 2024
 C) 1115 D) 1380

13) Find the missing number:

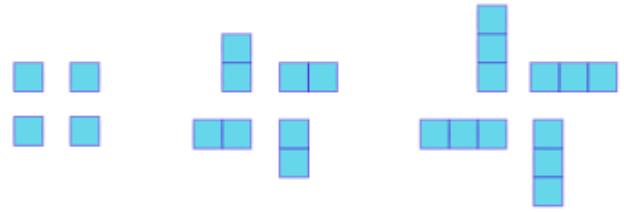
$$\div 9 \times 8 + 12 = 68.$$

- A) 48 B) 60
 C) 54 D) 63

14) The sum of two numbers is 50. If one number is 12 more than the other, what is the greater number?

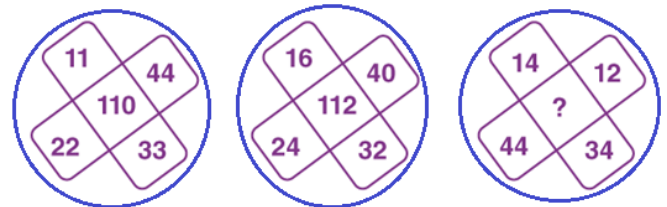
- A) 18 B) 30
 C) 31 D) 13

15) How many small squares are in the following figure?



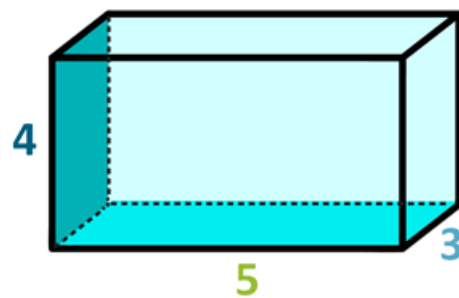
- A) 18 B) 15
 C) 16 D) 13

16) What is the missing number?



- A) 88 B) 120
 C) 95 D) 104

17) Find the surface area of rectangular prism?



- A) 88 B) 94
 C) 95 D) 98

18) Find the next number in the sequence:

$$2, 5, 10, 17, 26, ?$$

- A) 28 B) 37
 C) 36 D) 38

19) Suppose today is Monday. What day of the week will it be after 222 days?

- A) Saturday B) Sunday
 C) Wednesday D) Thursday

20) Solve:

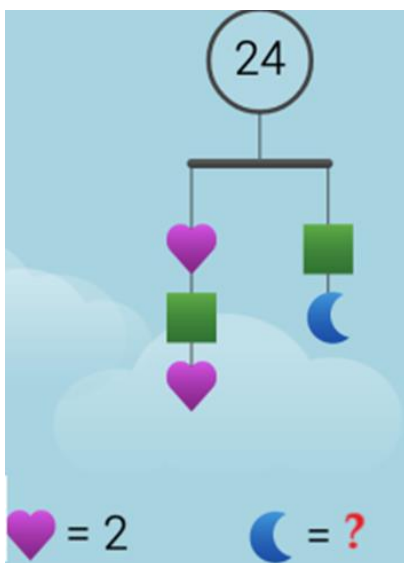
$$(68 \times 70 \times 74 \times 78) : (35 \times 37 \times 39) = ?$$

- A) 488 B) 520
 C) 544 D) 524

21) A store sells figs for \$0.75 each and mangoes for \$0.50 each. If Max buys eight mangoes and eight figs, how much does he spend?

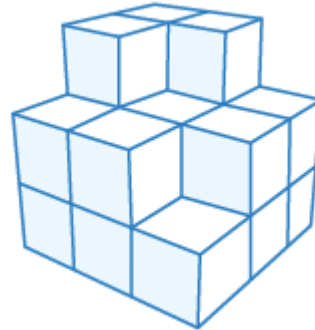
- A) \$ 8 B) \$ 11
 C) \$ 9,5 D) \$ 10

22) Solve:



- A) 2 B) 20
 C) 4 D) 12

23) How many small cubes are there?

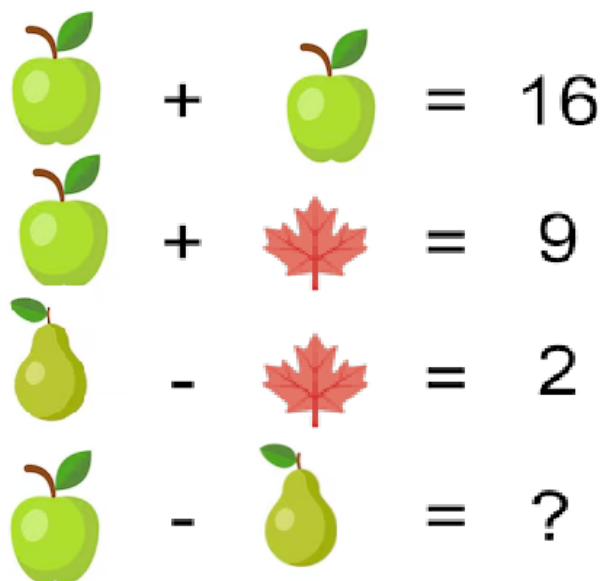


- A) 18 B) 20
 C) 15 D) 13

24) A motorbike travels at a speed of 65 km per hour. How long will it take to travel a distance of 845 km?

- A) 18 hours B) 9 hours
 C) 11 hours D) 13 hours

25) Solve:



- A) 5 B) 8

C) 1

D) 13